

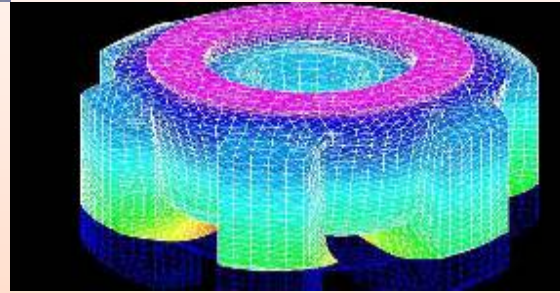


MINDGLOW ENGINEERING SOLUTIONS

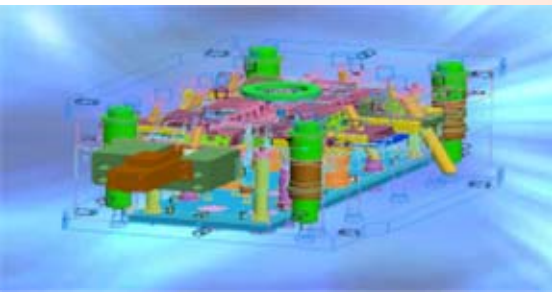
VISIONEERING THOUGHTS



PRODUCT DESIGN



CAD / CAE



MOLD DESIGN



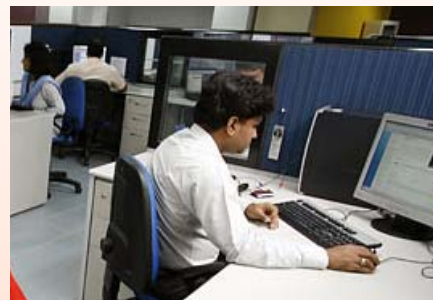
PROJECT MANAGEMENT



About Company

MindGlow is an endeavor established to provide engineering services and solutions to various industries worldwide. The Company's Corporate Office and Design & Development Center are based in Bangalore - India. Our versatile design team is conversant with design as well as manufacturing aspects and consists of talented engineers from various industrial domains. We provide continuous education and technical inputs to our team ensuring “ **Quality, Value & Time** ”

Our services are rendered through off-shore, on-site / off-site model. We add value to our global customers by offering end-to-end solutions in the spectrum of Design, Engineering and Manufacturing.



Business with Mindglow

- ◆ MindGlow assure customer satisfaction through quality, on-time and cost effective delivery of our services and solutions.
- ◆ Strategies to expand its global footprint and strengthen its presence in the Engineering market in the world
- ◆ Long term partnership and mutually beneficial business terms
- ◆ Adherence to best quality processes
- ◆ Dedicated Global Service Delivery Centers in India, North America & Middle East

Mission / Vision

- ◆ To offer utmost value added services to our customers through excellence, on-time delivery and competitive cost
- ◆ To be a leading service provider for our customers with great satisfaction

Domain Expertise

Automotive

MindGlow team has Automotive Product Design & Development expertise that includes: Engineering Design, Engineering Analysis, Mold Design, Mold flow analysis, Simulation & Program Management.

Aerospace

MindGlow Aerospace solutions incorporate the design and analysis of an Aircraft/Spacecraft Development which includes design optimization through increased rigidity and Weight plus Cost Reduction of different components/sub-systems.

General Industries

MindGlow service assistance covers various earth moving, mining and plant equipments with household and commercial appliances such as washing machines, refrigerators, dryers and cooking ranges.

Engineering Services

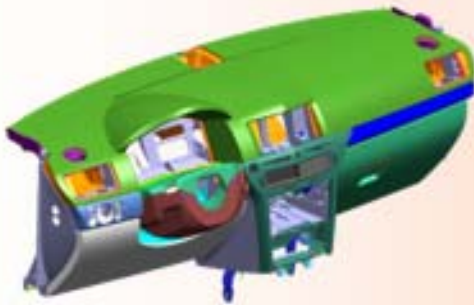
Product Design

Our product design team is built on creativity, it is central to our design process and a most vital tool in the creation of innovative, original, and viable commercial products.

We aim to create long term relationships with clients by our quality processes and best design methodology, ensuring more efficient design cycles on both time & cost.

Design services offered:

Concept Development, 3D Development, Kinematics, FE Modeling, FE Analysis, Moldflow Analysis, Detailing, Mold Design, Manufacturing Support, Program Management, Reverse Engineering, GD&T and Tolerance Stackup



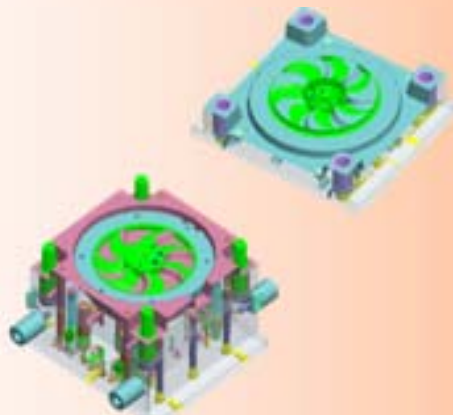
Mold Design & Mold Flow

Our team works with the reality of “ Molding your Product “. A great deal of thought goes into exactly what is required from the mold before the mold design is even considered. Design of runner, gating, venting and cooling systems are given special attention. We take help of moldflow analysis making iterations to achieve the perfect Mold design.

Our qualified CAE experts are available to assist you in fill, cool & warpage analysis, troubleshooting, and design validation and help you avoid potential problems in production. Moldflow analysis gives us confidence that the designs will have manufacturing feasibility, avoiding multiple mold trials.

Our key capabilities include:

- Concept Design
- Tool Design
- Manufacturing Drawings
- Filling Analysis
- Warpage Analysis
- Cool Analysis



Program Management

At MindGlow, we believe in total customer satisfaction and prefer to be a single window to Design, Develop and Produce parts for small and medium batch productions. We offer a full suite of activities from Concept Design to Part Production. MindGlow has experience in managing full-fledged Tooling projects for customers based in North America and Europe.

Our manufacturing capabilities :

Most of our project execution happens in Bangalore, India. Easy availability of good engineers from several training institutes makes it a hub for all kinds of tool development. We have a supplier base having full suite of manufacturing capabilities like CNC-Milling, EDM, Wirecut and Machining Centre etc. And also have Molding Machines for plastics and Presses for forming metal.



Computer Aided Design (CAD)

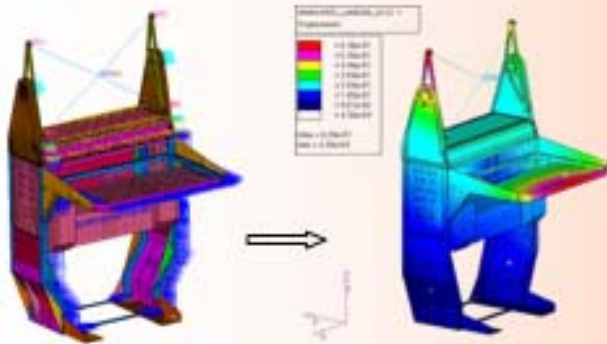
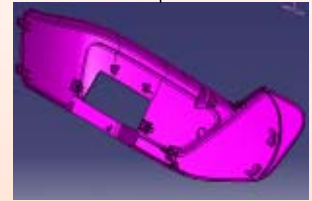
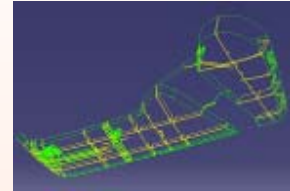
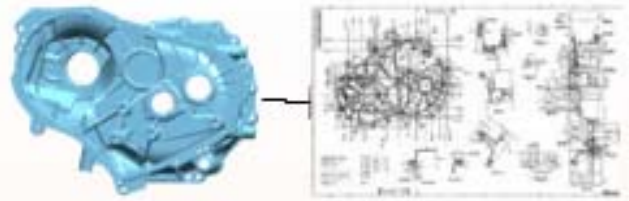
MindGlow offers you total solutions in CAD & CAE. Our strong knowledge in CAD/CAE software helps us provide solutions to our customers to reach the aim faster and at lower costs. We have specialized engineers to cater your needs in Analysis and can provide you customized engineering solutions for your industry.

Our expertise:

- Concept Design
- Part Design
- Surface modeling
- Re-Engineering
- Reverse Engineering
- Engineering Changes
- 2D/3D Modeling
- Layout drawings
- Knowledge based design

Software skills:

- CATIA V4 & V5
- UNIGRAPHICS
- PRO/Engineer
- Autodesk inventor
- Solid Works
- AutoCAD



Computer Aided Engineering (CAE)

MindGlow offers a complete range of analysis and simulation solutions in vehicle development to optimize design and minimize program risk.

The core team at MindGlow consists of leading industry professionals with vast domain expertise. The team has successfully executed complex design and development projects for Indian and Overseas companies.

Analysis Competencies:

- Structural Analysis
- Thermal Analysis
- Linear & Non linear Analysis
- Static & Dynamic Analysis
- Durability Analysis
- Fatigue Analysis
- Buckling Analysis
- Crash Analysis
- Optimization

Software skills:

- Hyper mesh
- MSC/Nastran
- Ansys
- Abaqus
- LS Dyna
- MSC/Patran

E-MAIL CONTACT

molddesign@mindglowindia.com
program-mgmt@mindglowindia.com
cad-cae@mindglowindia.com

Global Presence

USA

ECM Inc. New Jersey
 Tel: +1 -732 910 9727

Email: info@mindglowindia.com

Middle East

SaudiBox, PostBox 335770
 Riyadh, K.S.A

Tel: +966-1-472-7675

Email: info@mindglowindia.com



Global Delivery Center at Bangalore

No. 20/A, 50 feet road, 17th main,
 Muneshwara Block, Bangalore.560026.

Tel: +91 - 80 - 26722377

Fax: +91 - 80 - 26722377

Email: info@mindglowindia.com